

# Criteria for Early Discharge from Isolation and Home Quarantine



## Criteria for early discharge from isolation for persons infected with COVID-19 and discharge from community isolation facilities (CIFs) or home quarantine for close contacts

Infected persons who **have been sent to CIFs** and persons **pending admission** may conduct rapid antigen tests (RAT) on Day 6 and Day 7 after tested positive (currently the day following testing or collection of sample is counted as Day 1; if there is no such testing or collection record, the day on receiving the test result is counted as Day 1) if they **have received at least two doses of COVID-19 vaccines**. Similarly, **close contacts** who have received at least two doses of COVID-19 vaccines may conduct RATs on Day 6 and Day 7 of the home quarantine period.

If they obtain **negative test results during RATs on these two successive days**, they may leave CIF or home premises earlier on Day 7 for their daily activities; on the other hand: (i) If **infected persons** obtain at least one positive test result during RATs on these two successive days, they may subsequently conduct RATs on a daily basis. They may immediately leave CIF or home premises for their daily activities after they obtain **negative test results for two successive days**; (ii) If **close contacts** obtain a positive result at any time, they should **report** to the Centre for Health Protection.



Those who have received at least two doses of COVID-19 vaccines may immediately leave CIF or home premises for their daily activities once they satisfy the above criteria. They **do not need to wait for their household members to recover or complete quarantine**.

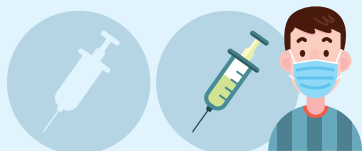


If close contacts who have received at least two doses of COVID-19 vaccines find more household member(s) tested positive during the home quarantine period, these close contacts **should count the day following testing or collection of sample of the last person tested positive at home as Day 1** for the purpose of conducting RATs.

## Persons who are not applicable

The criteria for early discharge from isolation and home quarantine mentioned above is not applicable to those who **have not been vaccinated or have only received one dose of COVID-19 vaccine**, as well as **household contacts of close contacts who only need to undergo home quarantine for four days under the "StayHomeSafe" Scheme**.

For people who have not been vaccinated or have only received one dose of COVID-19 vaccine, no matter whether they are infected persons staying in CIFs, pending admission to hospitals or isolation facilities or close contacts under home quarantine, are required to undergo **14-day medical surveillance** at CIF or home. They must also fulfil relevant testing requirements before being considered for completion of isolation or home quarantine.



### StayHomeSafe

Thematic Webpage



### Points to Note for Persons Pending Admission

Thematic Webpage



Version date: 6 March 2022



衛生防護中心  
Centre for Health Protection



更多防疫資訊

For more information on fighting the virus:

[www.coronavirus.gov.hk](http://www.coronavirus.gov.hk)



衛生防護中心Facebook專頁

Centre for Health Protection Facebook Fanpage

[fb.com/CentreforHealthProtection](https://fb.com/CentreforHealthProtection)

衛生署健康教育專線  
Health Education Infoline of the Department of Health

2833 0111



衛生署  
Department of Health